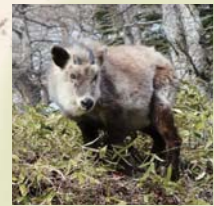
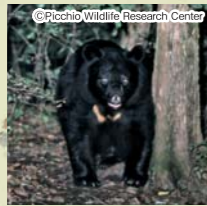


Flora and Fauna



Japanese serow
(Special natural treasure)



Asiatic black bear



Red fox



Japanese hare



Marten



Japanese leaf warbler



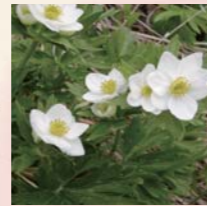
Spotted nutcracker



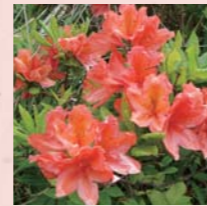
Red-flanked bluetail



Hornet



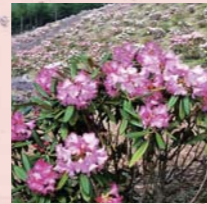
Anemone narcissiflora
(Mid June-mid July)



Rhododendron molle subsp japonicum
(Mid June-mid July)



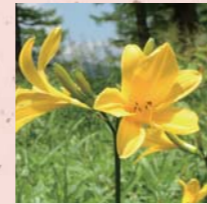
Dicentra peregrina
(End of June-July)



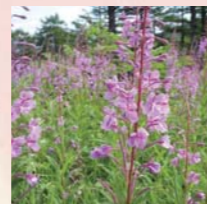
Rhododendron degonianum
(July)



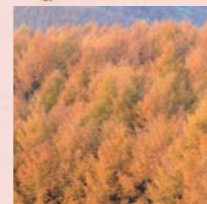
Rhododendron brachycarpum
(July)



Hemerocallis esculenta
(Mid-July-mid-August)



Chameion angustifolium
(End of July-mid September)



Larix kaempferi
(Autumn leaves)



(Pine cone)

Advice and Etiquette



Equipment and Clothing

- *Foot wear. Trekking/Hiking shoes/boots that properly support and protect your ankles are recommended.
- *Rain jackets and rain pants
- *Warm Clothes *Hat
- *Long T-shirts *Long pants, Gloves



Food and Water

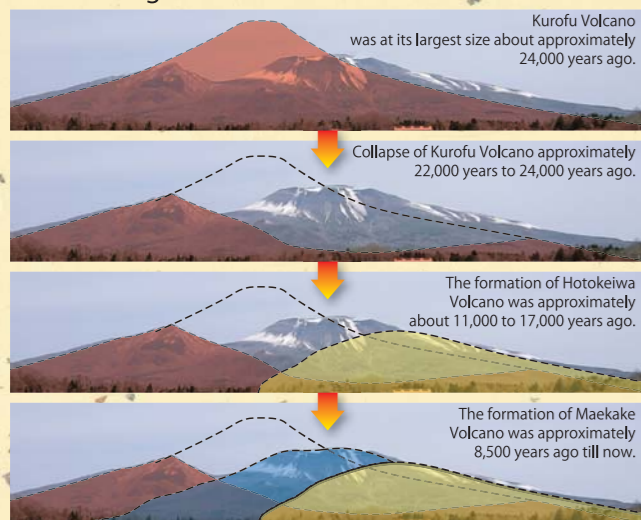
Mountain walking is a tiring and potentially exhausting physical activity. Be sure to take long-life food that is high in calories (chocolate, nuts, candy, etc...) and plenty of water so you can remain hydrated.



Natural Enviroment

To protect the natural environment, never remove plants, insects and never stray off the mountain path. Do not take pets with you as they may affect the ecosystem of alpine regions. Please take your garbage back home with you and always be considerate of other visitors. Do not feed the wild animals.

The origin of the Mt.Asama kurofu Volcano



Mt. Asama is the east-end volcano of the Asama-Eboshi volcanic group. The current Mt. Asama consists of 3 volcanoes, Mt.Kurofu, Mt.Maekake and Mt.Kama. Mt.Kurofu was active from about 100,000 to 2,500 years ago. Before the large collapse of the volcanic activity about 24,000 years ago, the mountain height is assumed to be 2,800m, higher than Mt. Asama today (2,568m). Mt.Maekake became active about 10,000 years ago, since then, a large eruption occurs approx. every 1,000 years. The last large eruption occurred in 1783, and about 1,500 people died in this eruption. Mt. Asama has been a holy mountain for the people lived in this area and the object of mountain worship and many mountain pilgrims of Buddhism climbed for pray. This mountain is still very popular for the many mountaineer as one of the top 100 famed mountains in Japan. Also it has been told in the folk tale of this area that a big Tengu (long-nosed goblin) lived in this mountain. When the imprudent person, such as thief or liar came into the mountain. Tengu threw such person into ravine or broke their neck.

Access Guide to Mt.Asama Trail Heads

Kurumazaka Pass

- By car | 35 min from Komoro Station or Komoro Inter change
- By bus | 35 min from Komoro Station (JR bus to Takamine Kogen Hotel; two round trips a day; 1,070 JPY (One way)
- By taxi | 35 min about 6,000 JPY (One way)

Hotel Asama Sanso

- By car | 25 min from Komoro Station or Komoro Inter change
- By bus | 15 min from Komoro Station to Asama Tozanguchi (JR bus ; two round trips a day ; 700 JPY (One way)
- By taxi | 25 min about 4,500 JPY from Komoro Station



80 min by walk from the bus stop of Asama Tozanguchi to Tengu Onsen Asama Sanso Hotel(Gravel wheeling).

Tengu(long-nosed goblin)

For Anxiety-Free, Safe Mountaineering

1, Communication Devices

Please secure a means of communication such as a mobile phone. The ability to use such devices may vary depending on location, weather and model, so remember not to rely too strongly on it and carrying other signaling devices, such as mirrors, flashlights and whistles are also recommended. Make sure to carry extra or rechargeable batteries and a portable phone recharger.

2, Mountain Climbing Registration

Do not make plans that exceed your abilities and make sure to register your itinerary beforehand. You can place it into the post box at the entrance of the hiking path or at the nearest mountain hut. This itinerary will let others know where and when you are in the mountains.

3, Be Careful of Dangerous Animals

Bears / Be sure to carry a bear repellent bell with you. Bears hear the noise of the bell and should not approach you or your party.

Hornets / Hornets are sensitive to the color black and floral smell like perfume. When you see a few hornets, don't arouse them and be quiet. If you see a large group of hornets, run away immediately. If you are stung by a hornets, wash out the diseased part with water and go down a mountain to a hospital.

Emergency

Komoro Police ————— 0267-22-0110
Komoro Fire Station: ————— 0267-24-0119
Asama Nanroku Komoro Medical Center
————— 0267-22-1070

Transportation Information

JR Bus Komoro Branch ————— 0267-22-0588
Chikuma Bus Komoro Branch — 0267-22-2100
Komoro Kankou Taxi ————— 0267-22-2424
Daiichi Koutsu Taxi ————— 0267-22-4141
Nyuukoutsu Taxi ————— 0267-22-0015

Information



Accommodation and Sightseeing (Japanese only) — TEL:+81267220568

Komoro Tourism Bureau — MAIL: info@komoro-tour.jp

This information is accurate as of march 2020. 05000.001.A.20200507

<http://www.komoro-tour.jp>



Mountain Trail

Eruption Alert Level

Path you can use during Warning Level 3

Path you can use during Warning Level 2

Path you can use during Warning Level 1

Roadway

Estimate Time Required

←00

- = Trail Head
- ▲ = Shelter
- = Level Information Board
- ☎ = Mountain Climbing Registration Postbox
- 📢 = Emergency Broad Casts Speaker
- M = Mountain Trail Map

View

- 📷 Viewpoint
- ♨ Hot Spring

Food

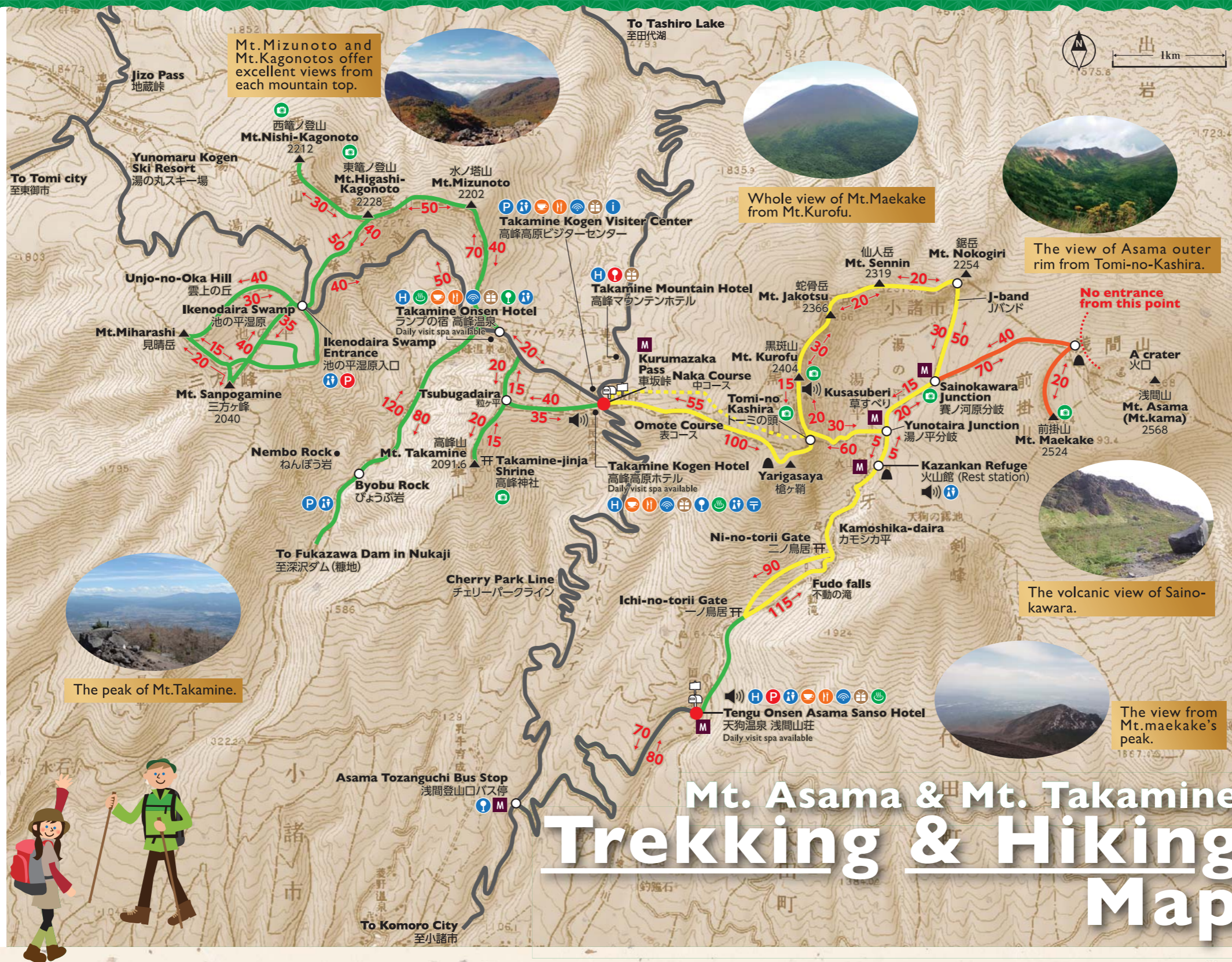
- ☕ Café
- 🍽 Restaurant

Information&Traffic

- 📍 Tourist Information Office
- 🚻 Restroom
- P Pay Parking Lot
- P Public Free Parking Lot
- 📶 Wi-Fi
- 🚌 Bus Stop (All season)
- 🕒 Bus Stop (From early May to Late Nov.)
- 🕒 Bus Stop (From late Nov. to early May)
- 📬 Post Box
- 🏨 Hotel

Other

- 🛍 Shopping



Mt. Asama Range, Trekking & Hiking Course

Mt. Takamine Trekking Course (Approx. 2h)

Kurumazaka Pass 40mins → Tsubugadaira 20mins → Mt. Takamine 35mins → 15mins

Ikenodaira Swamp Hiking Course (Approx. 4hs)

Kurumazaka Pass 70mins → Ikenodaira Swamp Entrance 40mins → 30mins
Unjou no Oka Hill (Mt. Miharashi) 20mins → Mt. Sanpogamine 10mins → Kagami-ike 30mins → 20mins
Ikenodaira Swamp Entrance 60mins → Kurumazaka Pass 70mins

Mt. Mizunoto/ Mt. Kagonoto Trekking Course (Approx. 4h)

Kurumazaka Pass 20mins → Takamine Onsen Hotel 70mins → Mt. Mizunoto 50mins → 50mins
Mt. Higashi-Kagonoto 40mins → Ikenodaira Swamp Entrance 40mins → Takamine Onsen Hotel 50mins
20mins → Kurumazaka Pass 20mins

Mt. Asama Circulas Course (Approx. 8h)

Kurumazaka Pass 100mins → Tomi-no-Kashira 20mins → Mt. Kurofu 30mins → 30mins
Mt. Jakotsu 20mins → Mt. Sennin 20mins → J-Band 30mins → 50mins
Sainokawara Junction 90mins → Mt. Maekake 60mins → Sainokawara Junction 90mins
15mins → Yunotaira Junction 5mins → Kazankan Refuge 80mins → Tengu Onsen Asama Sanso Hotel 155mins

Mt. Kurofu Trekking Course (Approx. 3h and half)

Kurumazaka Pass 100mins → Tomi-no-Kashira 20mins → Mt. Kurofu 55mins → 15mins

Kazankan Refuge Trekking Course

Tengu Onsen Asama Sanso Hotel 115mins → Kazankan Refuge 5mins → Yunotaira Junction 20mins → 90mins → 15mins
Sainokawara Junction 90mins → Mt. Maekake 60mins

Eruption Alert Level

Level 3

Limited access to the mountain

Level 2

Limited access to near the crater

Level 1

Normal

Restrictions

Access may be limited to further than 4km from the crater. There may be temporary restrictions on different areas according to the situation.

No-one is permitted within 4km of the crater, from Kurumazaka Toge(Kurumazaka Pass) and Ichi-no-Torii Gate up wards.

No-one is permitted within 2km of the crater, from Sainokawara upwards, access allowed to Yunotaira.

No-one is permitted within 500m of the crater including Mt. Kama access allowed to the top of Mt. Maekake.

Notice board of Volcanic eruption alarm level

For further information on related restrictions, please contact the town office of Karuizawa, Miyota, Komoro, Saku, Tsumagoi, or Naganohara.



Precautions for Mountain Climbing (Climbing is your responsibility, and make sure you submit a climbing itinerary.)

- ▲Mt. Asama is an active volcano. Even if you are walking the correct paths, there is a possibility that volcano might erupt, so please take care.
- ▲Volcanic gas is very dangerous, as it is not visible.
- ▲Please check the current alert level on the level information board at trail heads.

Preparation in case of an unexpected eruption

- When the smoke increases.
- When you feel ground rumbling.
- When you hear the emergency broadcast.



Please return to the Tengu Onsen Asama Sanso Hotel or Kurumazaka Pass immediately.